



## JHAHB SERIES HIGH AMBIENT HIGH BAY

### PRODUCT DESCRIPTION

The Jademar JHAHB highbay series is designed for operation in high temperature environments up to 80°C/176°F and low temperatures to 22°C/-30°F.

This series is IP66 rated for operation in wet environments and all weather conditions including high humidity, wind and rain.

Standard 12kV surge suppression provides protection for both outdoor pole mounted installation and in proximity to high voltage factory and industrial machinery.

The JHAHB series is ANSI C136.31 3G vibration rated for installation on machinery, industrial infrastructure, bridges and other demanding applications.

### FEATURES

- System Light Efficacy 130 lm/W
- Operation Temperature up to 80°C/176°F
- Flexible, Modular Design
- Multiple Choice of Optical Lenses
- Easy Installation & Maintenance
- IP66 Dust Tight Housing
- 3G Vibration Rating
- 5 Years Warranty
- ETL Listed / FCC / RoHS

### CERTIFICATIONS AND COMPLIANCE



50W



100W



150W



200W



300W



450W

### PERFORMANCE SUMMARY

Input Power:	50W-450W
Efficacy:	130 lm/W
CCT:	3000K / 4000K / 5000K
CRI:	CRI: >70
Input Voltage:	100-277VAC & 200-480VAC (80°C) 100-277VAC & 277-480VAC (50°C & 60°C)
Dimming	Optional
Surge Protection:	12KV
Certifications & Compliance	ETL / FCC / RoHS / IP66
Lifetime Based on TM21:	L70 ≥194,000 Hrs L80 ≥137,000 Hrs L90>87,600 hours
Warranty:	5 Years

### APPLICATIONS

- Warehouses
- Manufacturing Plants
- Convention Centers
- Sporting Arenas
- Big-Box Retail Stores
- Cold Storage Facilities
- Gymnasiums



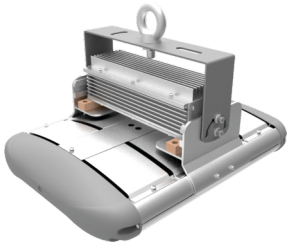
## SPECIFICATION SUBMITTAL DETAIL

Project Name/Type:		Date:
Catalog/Part #:		

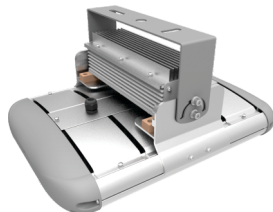
### JHAHB HIGH AMBIENT HIGH BAY

ORDERING INFORMATION / EXAMPLE: **JHAHB-50W-H-30K-IROS-70X135-EM-GR-60C**

Product Series	Wattage	Input Voltage	CCT	Controls & Dimming	Light Distribution	Mounting Options	EM Battery Backup	Housing Color	Temperature Options
JHAHB	50W 100W 150W 200W 300W 450W	Blank (100-277VAC)  H (200-480VAC)  Blank (100-277VAC)  H (277-480VAC)	30K (3000K) 40K (4000K) 50K (5000K)	Blank (0-10V Dimming) Standard  IROS (Infrared OCC Sensor)	150D (150 Degrees) 120D (120 Degrees) 90D (90 Degrees) 30D (30 Degrees) 70X135D (70*153 Degrees) 75X145D (75*145 Degrees) 60X150D (60*150 Degrees) 73X133D (73*133 Degrees) 60X100D (60*100 Degrees) 70X130D (70*130 Degrees) 30X100D (30*100 Degrees)	Blank (Eye Hook Mount) Standard  UB (U-Bracket Mount)  SF (Slipfitter Mount)  ARM (Arm Mount)	EM (EM Pack)	GR (Gray Finish Standard)  BK (Black Finish *Special Order*)  BZ (Bronze Finish *Special Order*)	Blank (80°C)   50C (50°C) 60C (60°C)



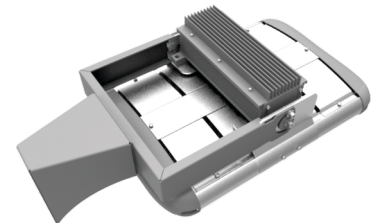
Eye-Hook Mount



U-Bracket Mount



Slipfitter Mount



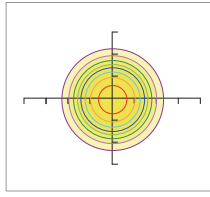
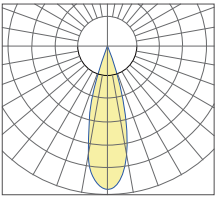
Arm Mount

### LUMEN PERFORMANCE AND ELECTRICAL DATA TABLE

Product Number	JHAHB-50W	JHAHB-100W	JHAHB-150W	JHAHB-200W	JHAHB-300W	JHAHB-450W
Maximum Dimensions	14.4" x 10.7" x 9.3"	12.1" x 14.4" x 9.2"	15.8" x 14.4" x 9.2"	19.5" x 14.4" x 9.2"	26.9" x 14.4" x 9.2"	38" x 14.4" x 9.2"
Nominal watts	50W	100W	150W	200W	300W	450W
Average Nominal Efficacy (lm/W)	130	130	130	130	130	130
Average Lumen Output (lm)	6,500	13,000	19,500	26,000	39,000	58,500
Nominal Weight	9.4 lbs.	11.0 lbs.	13.7 lbs.	16.3 lbs.	24.3 lbs.	35.7 lbs.
Input Voltage	100-277 VAC or 347/480 VAC					
CCT	3000K/ 4000K/ 5000K					
CRI	≥70					
THD @ 120VAC	<15%					
Power Factor	0.95 Minimum					
BUG Rating	B3-U3-G1					
Controls	Standard 0-10VDC Dimming / PIR Occupancy Sensor Optional					
Construction/ IP Rating	Epoxy Powder Coat Finish - Aluminum Alloy - Polycarbonate Lens - IP66 - Dust Tight					
Beam Angle/Field Angle	30-130 Deg. Lateral Beam Angle Options					
Lifetime Based on TM21	L70 ≥194,000 Hrs / L80 ≥137,000 Hrs / L90 >87,600 hours					
Ambient Working Temp	-30 to 80°C (-22 to 176°F) Standard					
Certifications	ETL / cETL / DLC / CE / RoHS / CB / WEEE / SAA					
Limited Warranty	5 Years					

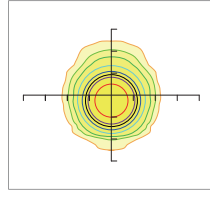
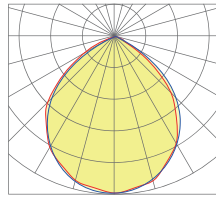


30°



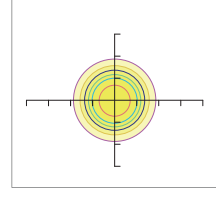
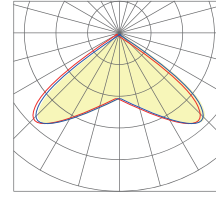
0.0~180.0  
90.0~270.0

90°



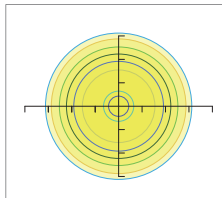
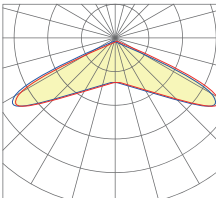
0.0~180.0  
90.0~270.0

110°



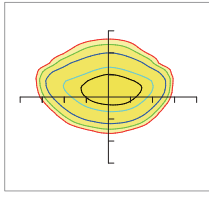
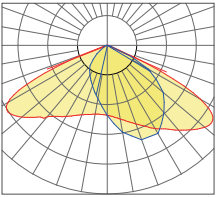
0.0~180.0  
90.0~270.0

150°



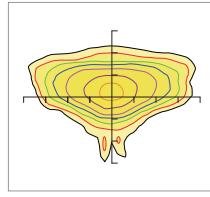
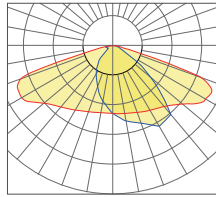
0.0~180.0  
90.0~270.0

70 x 135°



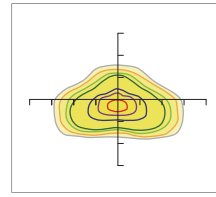
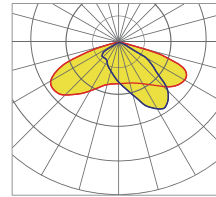
0.0~180.0  
90.0~270.0

75 x 145°



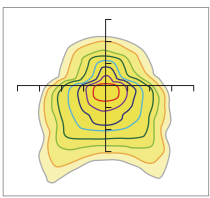
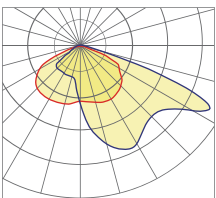
0.0~180.0  
90.0~270.0

60 x 150°



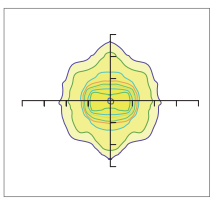
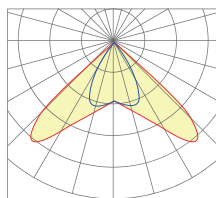
0.0~180.0  
90.0~270.0

73 x 133°



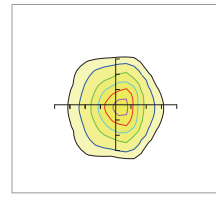
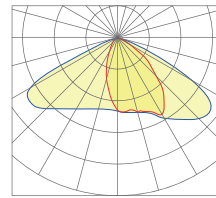
0.0~180.0  
90.0~270.0

60 x 100°



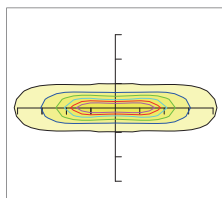
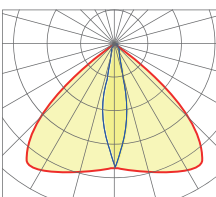
0.0~180.0  
90.0~270.0

70 x 130°



0.0~180.0  
90.0~270.0

30x100°



0.0~180.0  
90.0~270.0

